

FM/AM Compact Disc Player

Installation/Connections

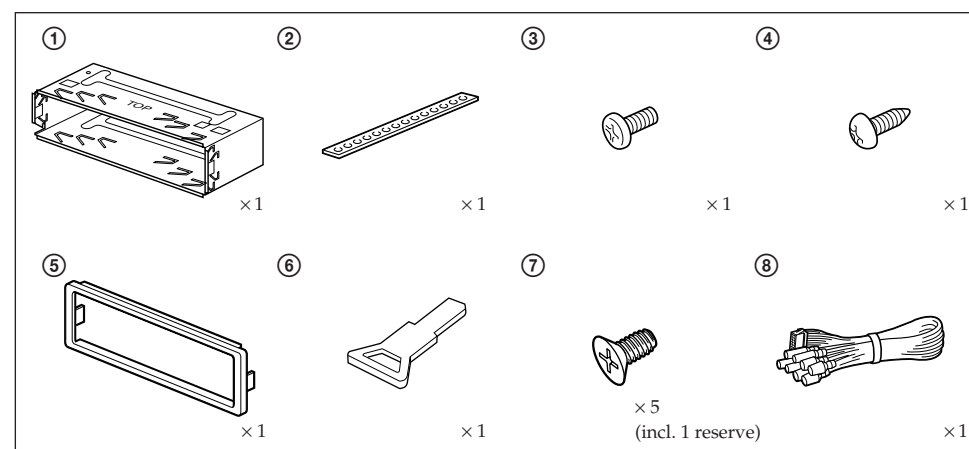


CDX-C560

Sony Corporation © 1997 Printed in Japan

Parts for Installation and Connections

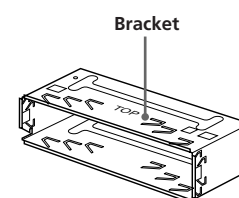
The numbers in the list are keyed to those in the instructions.



The release key ⑥ is used for dismounting the unit. See the operating instructions manual for details.

Caution

Cautionary notice for handling the bracket ①.
Handle the bracket carefully to avoid injuring your fingers.



Installation

Precautions

- Do not tamper with the four holes on the upper surface of the unit. They are for tuner adjustments to be done only by service technicians.
- Choose the installation location carefully so that the unit will not hamper the driver during driving.
- Avoid installing the unit where it would be subject to high temperatures, such as from direct sunlight or hot air from the heater, or where it would be subject to dust, dirt or excessive vibration.
- Use only the supplied mounting hardware for a safe and secure installation.

Mounting angle adjustment

Adjust the mounting angle to less than 20°.

How to Detach and Attach the Front Panel

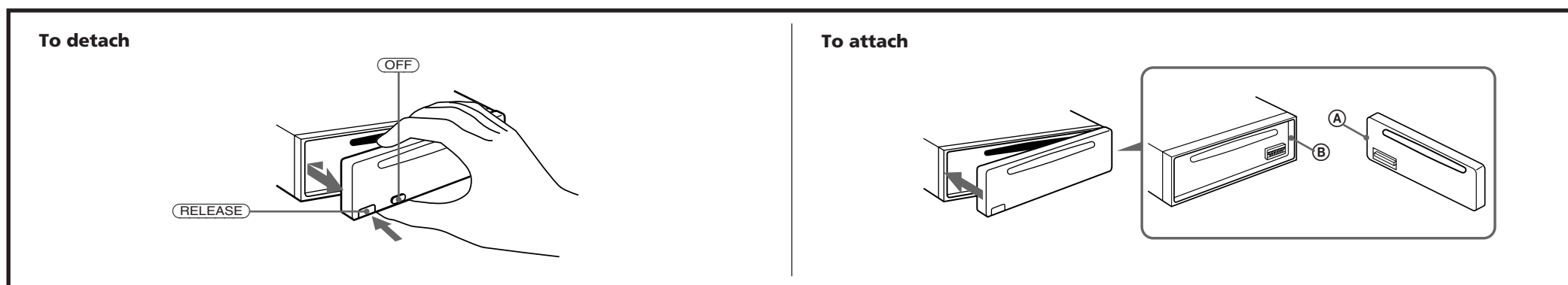
Before installing the unit, detach the front panel.

To detach

Before detaching the front panel, be sure to press **OFF** to turn the unit. Then press **RELEASE**, slide the front panel a little to the left, and pull it off toward you.

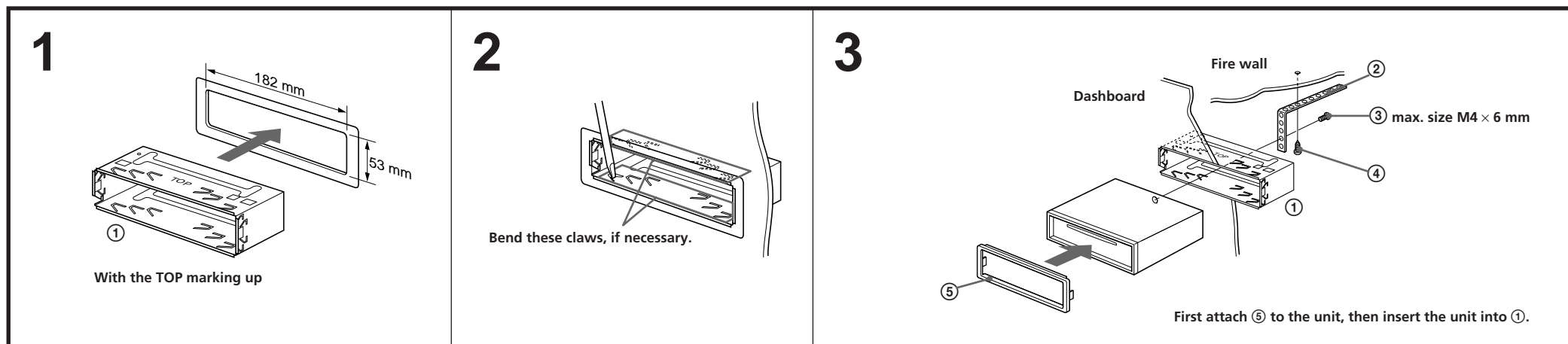
To attach

Align the parts **A** and **B**, and push the front panel until it clicks.



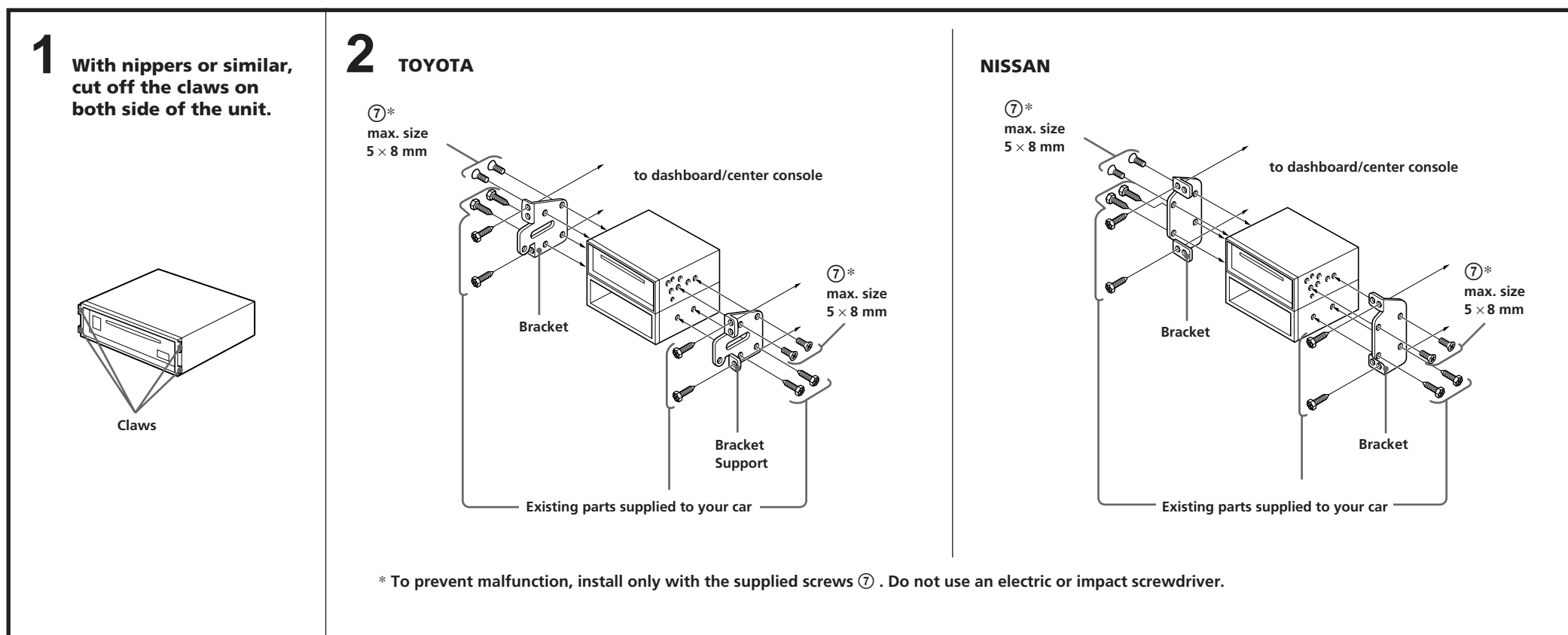
Mounting Example

Installation in the dashboard



Mounting the Unit in a Japanese Car

You may not be able to install this unit in some makes of Japanese cars. In such a case, consult your Sony dealer.



Connections

Caution

- This unit is designed for negative ground 12 V DC operation only.
- Before making connections, disconnect the ground terminal of the car battery to avoid short circuits.
- Connect the **yellow** and **red** power input leads only after all other leads have been connected.
- Be sure to connect the red power input lead to the positive 12 V power terminal which is energized when the ignition key is in the accessory position.
- **Run all ground wires to a common ground point.**
- Connect the yellow cord to a free car circuit rated higher than the unit's fuse rating. If you connect this unit in series with other stereo components, the car circuit they are connected to must be rated higher than the sum of the individual component's fuse rating. If there are no car circuits rated as high as the unit's fuse rating, connect the unit directly to the battery. If no car circuits are available for connecting this unit, connect the unit to a car circuit rated higher than the unit's fuse rating in such a way that if the unit blows its fuse, no other circuits will be cut off.
- The use of optional instruments with this product will increase eye hazard.

If Your Car has No Accessory Position on the Ignition Key Switch

— POWER SELECT Switch

The illumination on the front panel is factory-set to be turned on even when the unit is not being played. However, this setting may cause some car battery wear **if your car has no accessory position on the ignition key switch**. To avoid this battery wear, **set the POWER SELECT switch located on the bottom of the unit to the ② position, then press the reset button**. The illumination is reset to stay off while the unit is not being played.

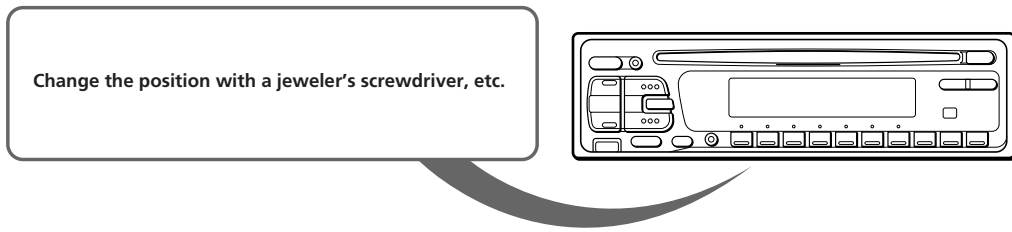
Note

The caution alarm for the front panel is not activated when the POWER SELECT switch is set to the ② position.

When a Equalizer or DSP (Digital Signal Processor) etc. is Connected

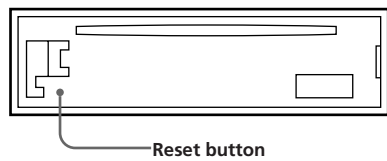
— LINE OUT/IN SELECT Switch

Set the LINE OUT/IN SELECT switch, which is on the underside of the unit, to position ②, so that the LINE OUT/LINE IN (EQ IN) terminal will function as LINE IN (EQ IN) terminal.



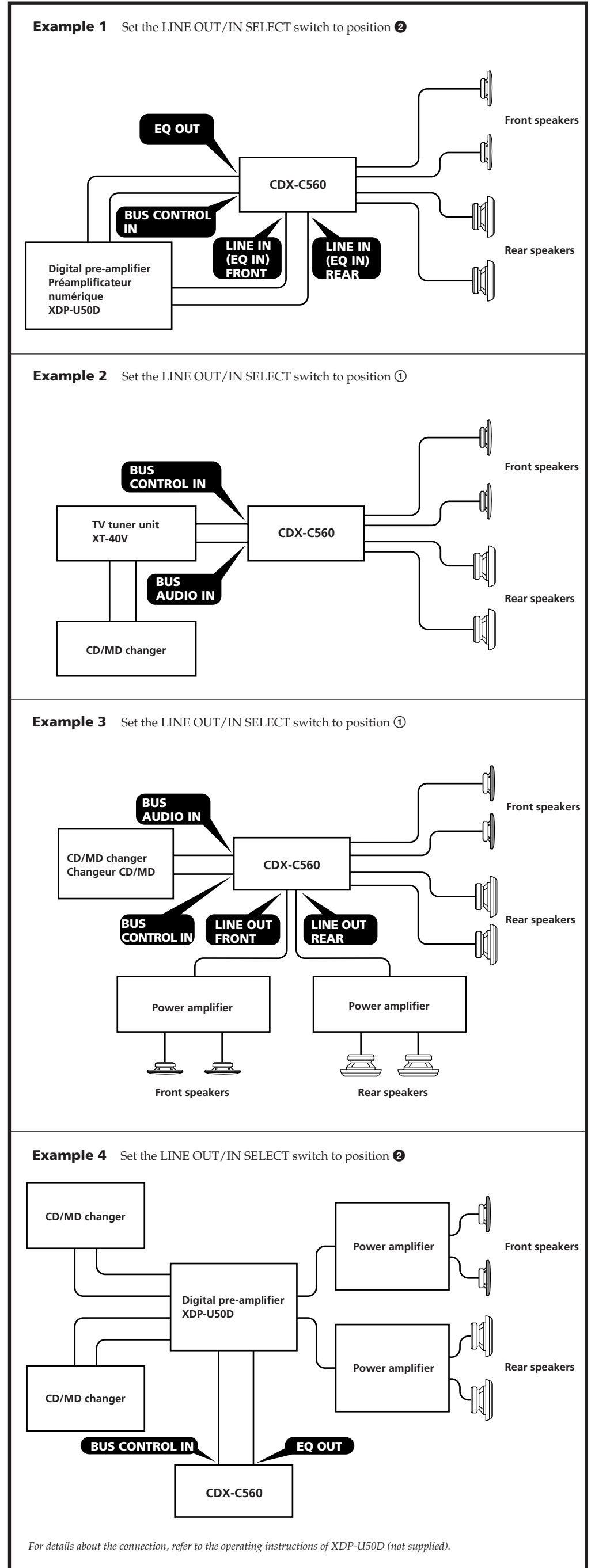
Reset Button

When the installation and connections are over, be sure to press the reset button with a ball-point pen etc.



Connection Diagram

For connecting two or more changers, the source selector XA-C30 (optional) and the BUS cable RC-61 (1 m) or RC-62 (2 m) (optional) are necessary.



Connection Example

