

Precautions

- Do not tamper with the four holes on the upper surface of the unit. They are used for tuner adjustments to be made only by service technicians.
- Choose the installation location carefully so the unit will not hamper the driver during driving.
- Avoid installing the unit where it would be subject to high temperatures, such as from direct sunlight or hot air from the heater, or where it would be subject to dust, dirt or excessive vibration.
- Use only the supplied mounting hardware for safe and secure installation.

Mounting angle adjustment

Adjust the mounting angle to less than 20°.

How to Detach and Attach the Front Panel

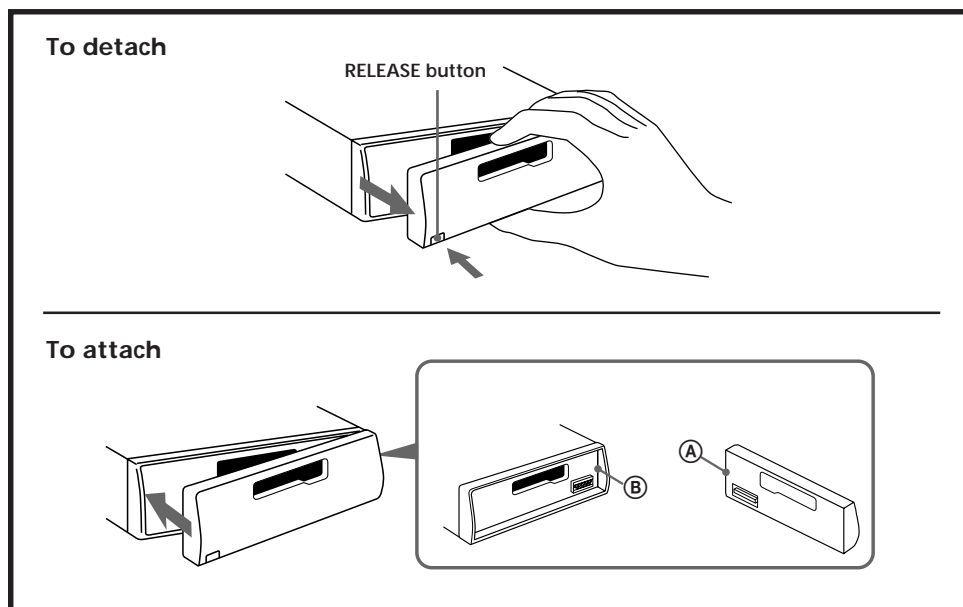
Before installing the unit, detach the front panel.

To detach

Press the RELEASE button to open up the front panel, then pull it out.

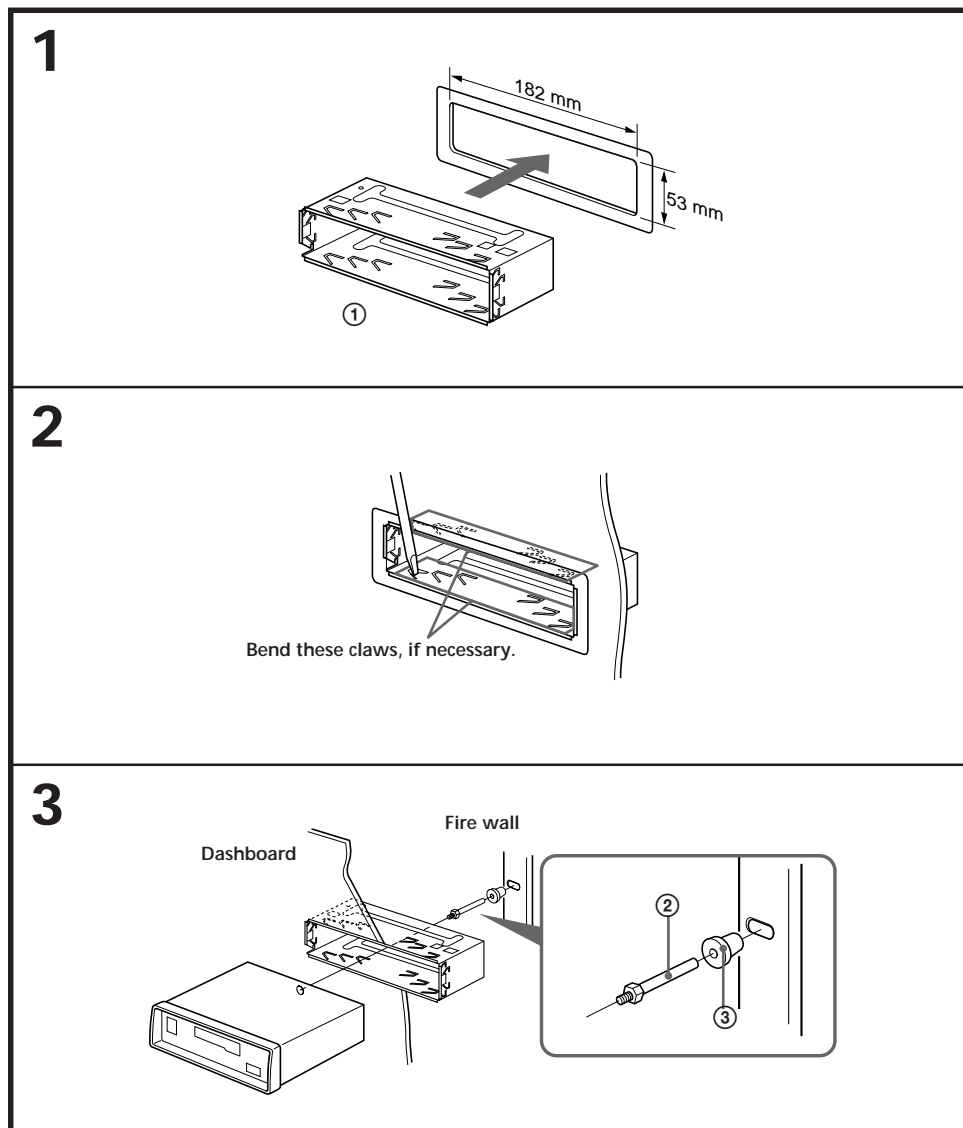
To attach

Align parts ① and ②, and push the front panel in until it clicks.



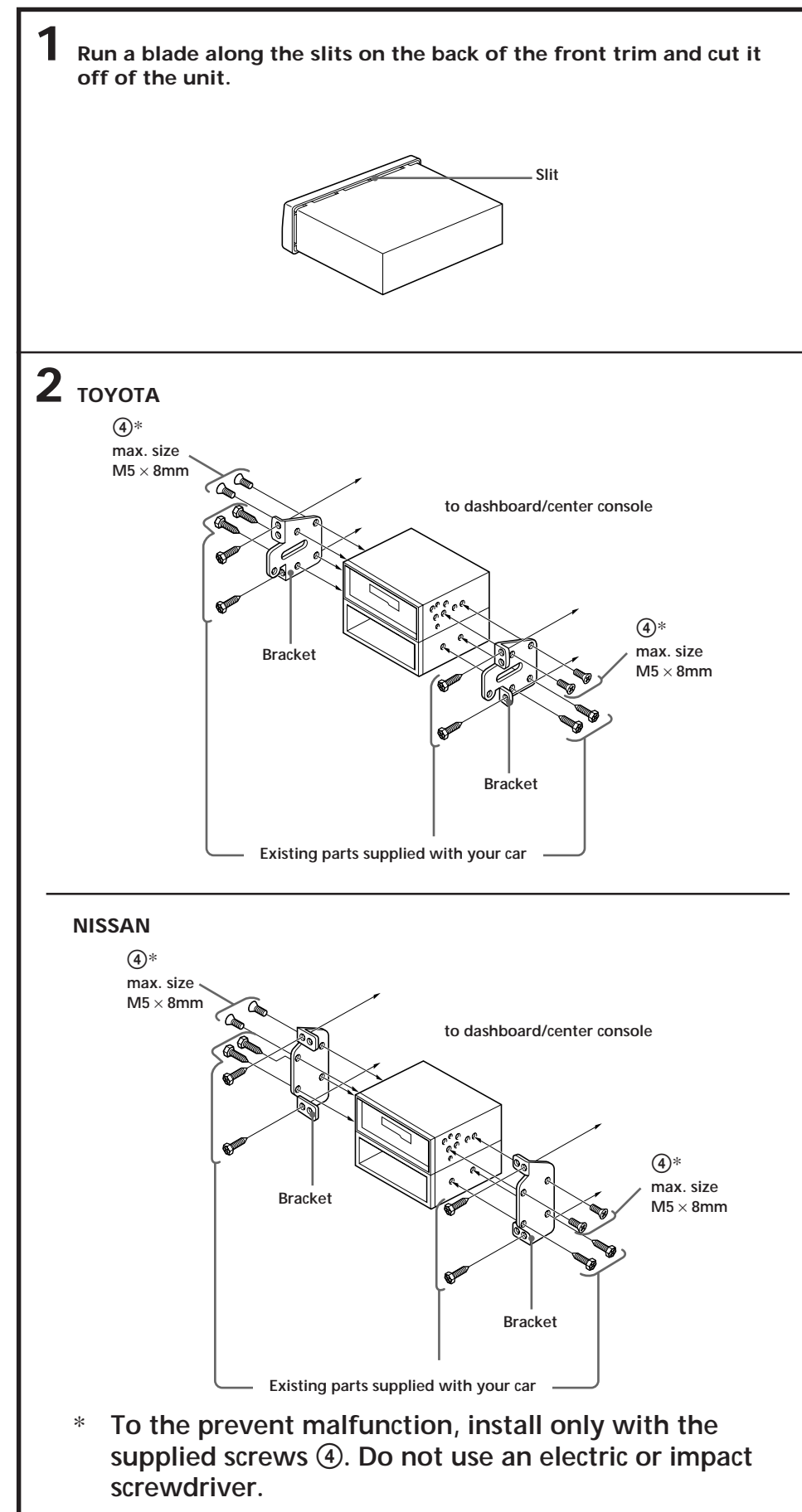
Mounting Example

Installation in the dashboard



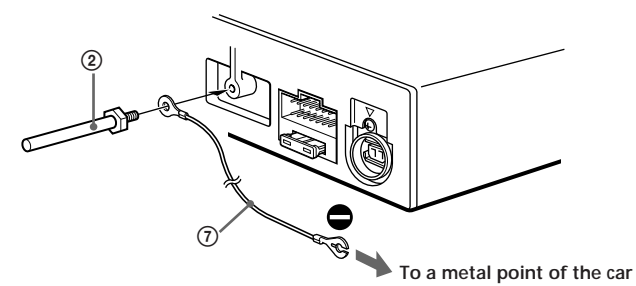
Mounting the Unit in a Japanese Car

This unit may not be installed in some makes of cars. In this case, consult your nearest Sony dealer.



Note for Connecting

If there is alternator noise (a whining sound when raising engine speed), ground the master unit by connecting it to a metal point of the car with the supplied chassis ground cord ⑦. Connect the ground cord to the master unit with part ② as shown in the illustration.



FM/MW/SW Cassette Car Stereo

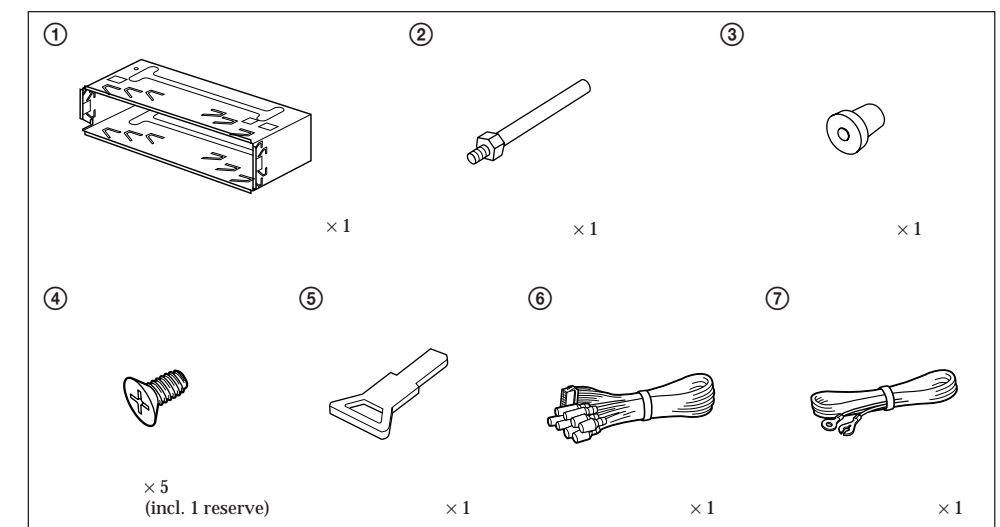
Installation/Connections

XR-C457

Sony Corporation © 1997 Printed in Indonesia

Parts for Installation and Connections

The numbers in the list are keyed to those in the instructions.



The release key ⑤ is used for dismounting the unit. See the Operating Instructions manual for details.

Caution

Cautionary notice for handling the bracket ①. Handle the bracket carefully to avoid injuring your fingers.

Connection

Caution

- This unit is designed for negative ground 12 V DC operation only.
- Before making connections, disconnect the ground terminal of the car battery to avoid short circuits.
- Connect the yellow and red power input leads only after all other leads have been connected.
- Be sure to connect the red power input lead to the positive 12 V power terminal which is energized when the ignition key is in the accessory position.
- Run all ground wires to a common ground point.
- Connect the yellow cord to a free car circuit rated higher than the unit's fuse rating.

If you connect this unit in series with other stereo components, the car circuit they are connected to must be rated higher than the sum of the individual component's fuse rating.

If there are no car circuits rated as high as the unit's fuse rating, connect the unit directly to the battery.

If no car circuits are available for connecting this unit, connect the unit to a car circuit rated higher than the unit's fuse rating in such a way that if the unit blows its fuse, no other circuits will be cut off.

If your car has no accessory position on the ignition key switch

— POWER SELECT switch

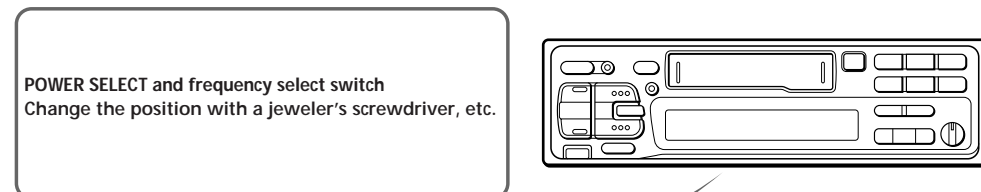
The illumination on the front panel is factory set to be turned on even while the unit is not in use. However, this setting may cause some car battery wear if your car has no accessory position on the ignition key switch. To avoid this battery wear, set the POWER SELECT switch located on the bottom of the unit to the **B** position, then press the reset button. The illumination is reset to stay off while the unit is not in use.

Note

The caution alarm for the front panel is not activated when the POWER SELECT switch is set to the **B** position.

Frequency select switch

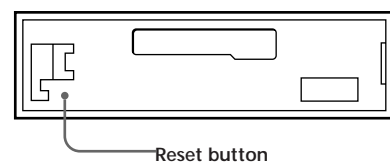
The MW (FM) tuning interval is factory-set to the 9K (50 K) position. If the frequency allocation system of your country is based on 10 kHz (200 kHz) interval, set the switch on the bottom of the unit to the 10 K (200 K) position before making connections.



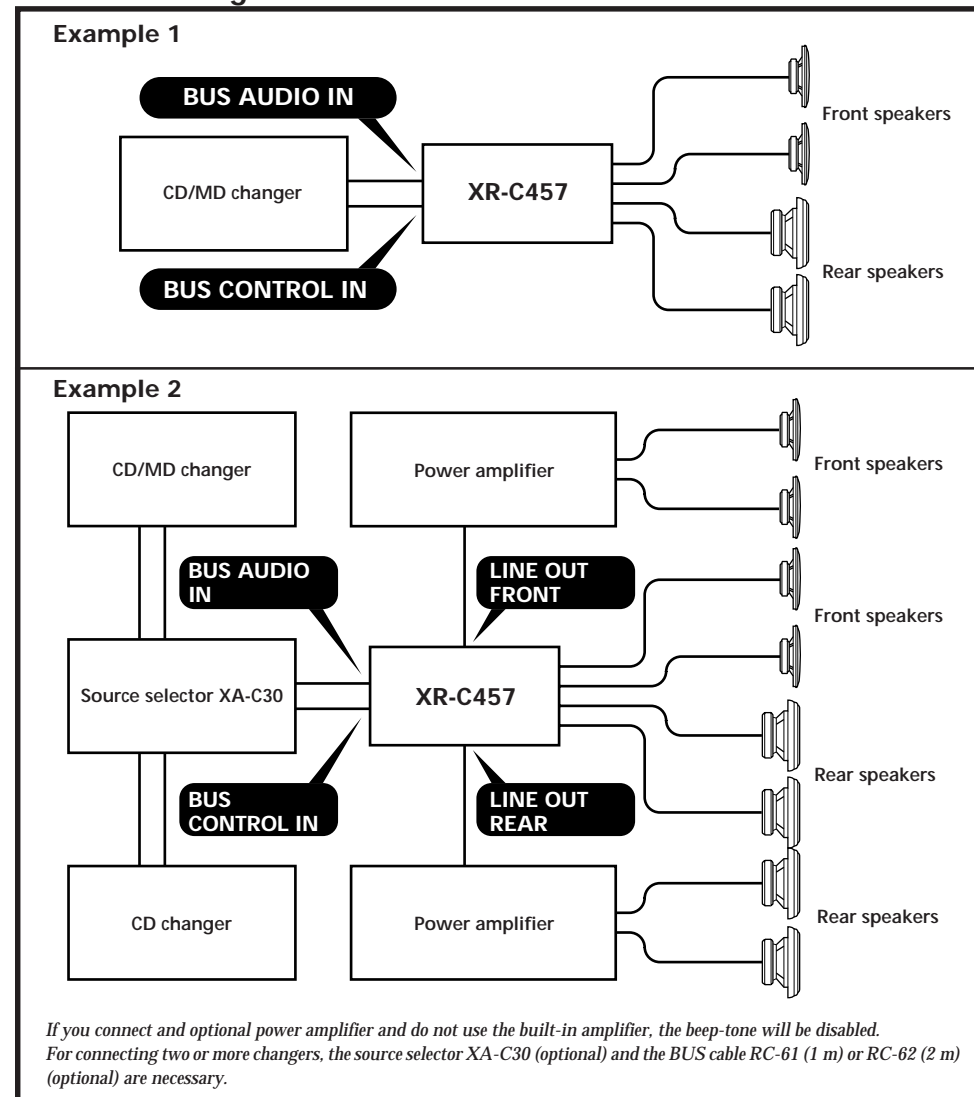
When you change the position of the switch, be sure to press one of the reset button after the connections are complete.

Reset button

When the installation and connections are complete, be sure to press the reset button with a ballpoint pen etc. The reset button is located on the left of the connector on the unit side when the front panel is detached.



Connection diagram



Connection example

