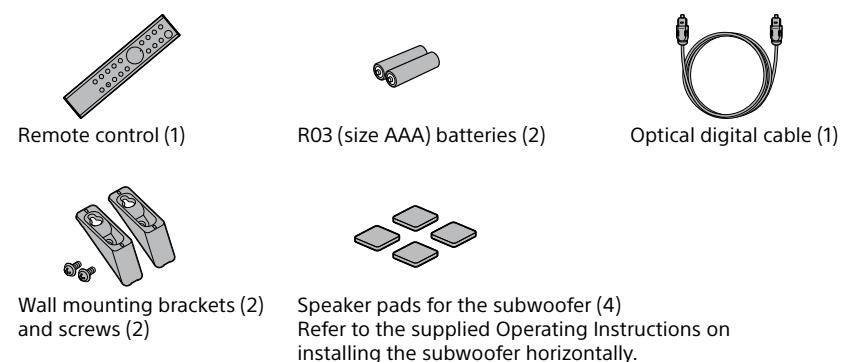




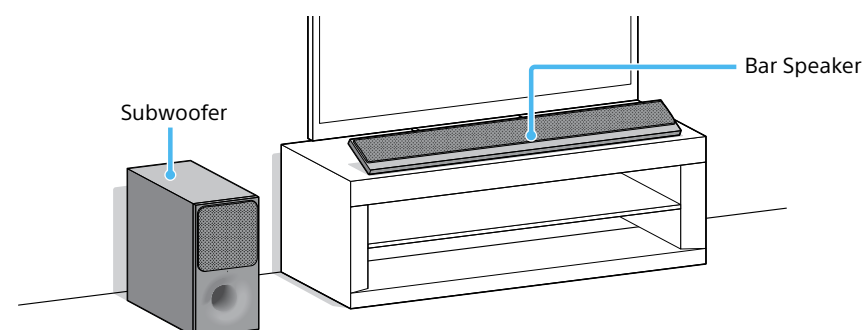
Sound Bar  
Startup Guide

HT-CT390

Supplied accessories



To mount the Bar Speaker on a wall  
Refer to the supplied Operating Instructions.

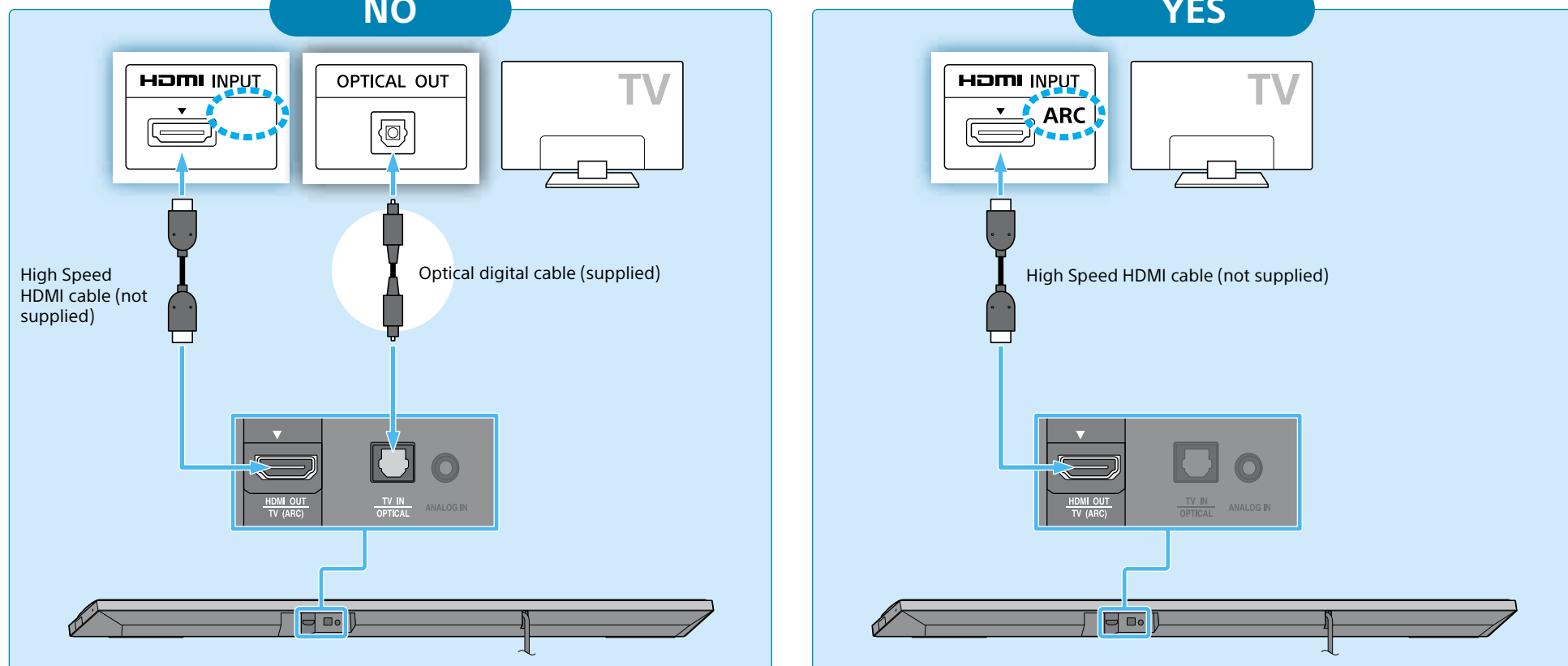


1 Connecting with a TV

Is the HDMI input jack on your TV labeled "ARC" ?

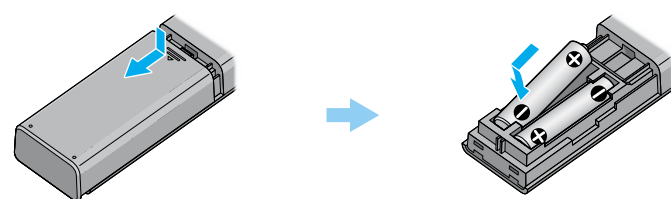
NO

YES

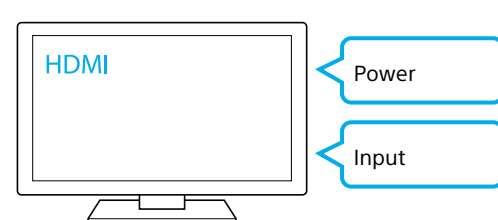


Note  
Make sure that the HDMI cable is firmly inserted.

2 Setting up the remote control

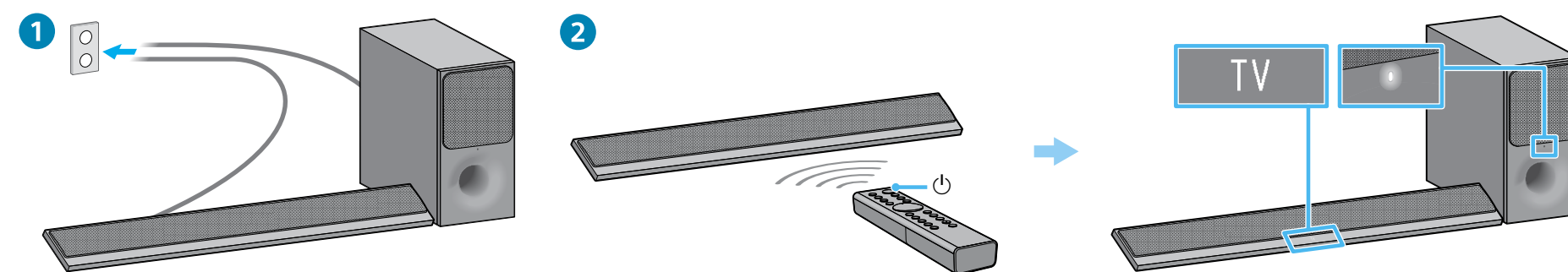


3 Turning on the TV



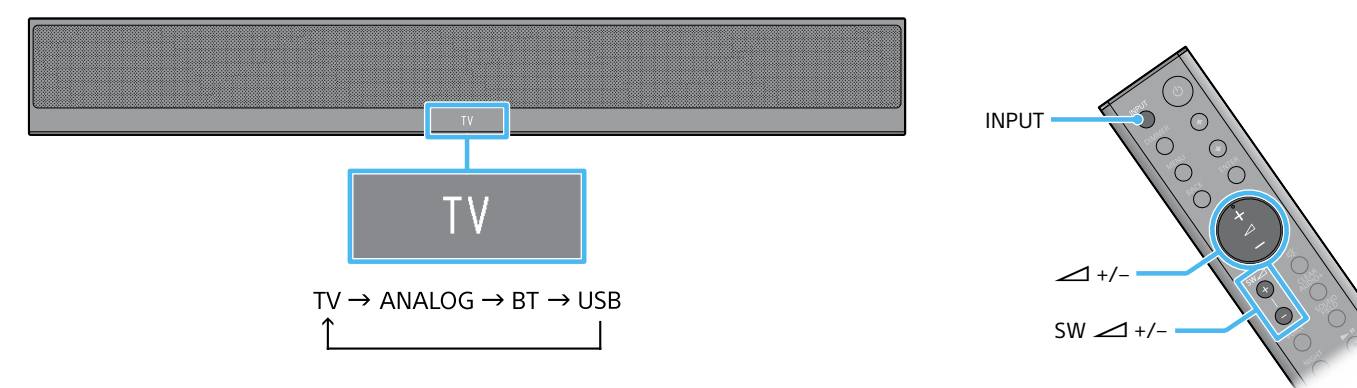
Change the input of the TV to the input which the Bar Speaker is connected.

4 Turning on the system



- 1 Connect the AC power cords (mains leads).
- 2 Press (power).  
The top panel display lights up.  
When the power indicator of the subwoofer turns green, wireless connection of Bar Speaker and subwoofer is completed. If it does not turn on, the wireless transmission is not activated. Refer to "No sound is heard from the subwoofer." of "Troubleshooting" in the supplied Operating Instructions.

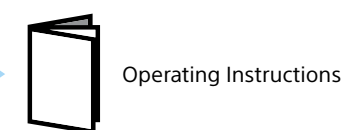
5 Listening to the sound



Press INPUT repeatedly until the device you want appears in the top panel display. Then, press +/- repeatedly to adjust the volume of the system and press SW +/- repeatedly to adjust the volume of the subwoofer.

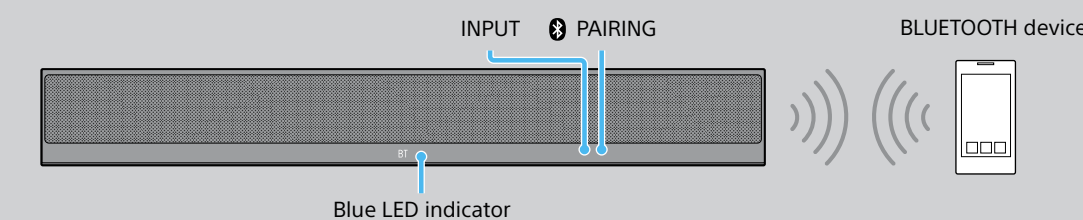
Setup completed! Enjoy!

Please refer to the supplied Operating Instructions about the sound mode, and other functions.



Listening to music from a BLUETOOTH device

When pairing a BLUETOOTH device



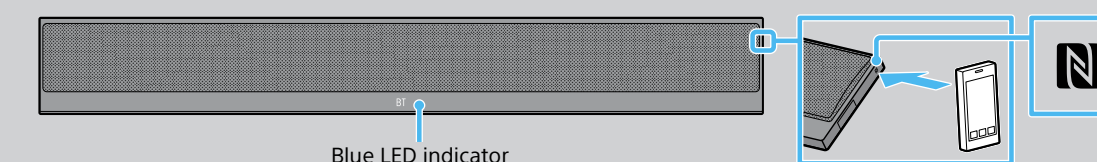
To pair the system with a BLUETOOTH device (Pairing)

- 1 Place the BLUETOOTH device within 1 meter from the Bar Speaker.
- 2 Press PAIRING on the Bar Speaker.  
The blue LED indicator on the Bar Speaker flashes quickly ( ) during BLUETOOTH pairing.
- 3 Turn on the BLUETOOTH function, and then select "HT-CT390" after searching for it on the BLUETOOTH device.  
Perform this step within 5 minutes, otherwise pairing mode may be canceled. When the BLUETOOTH connection is established, the blue LED indicator lights up ( ).  
If passkey is required on the BLUETOOTH device, enter "0000".

To listen to music from the paired device

- 1 Turn the BLUETOOTH function of the paired device to on.
- 2 Press INPUT repeatedly to select "BT".  
The system automatically reconnects to the BLUETOOTH device it was most recently connected to. When the BLUETOOTH connection is established, the blue LED indicator lights up ( ).
- 3 Start playback on the BLUETOOTH device.
- 4 Adjust the volume.

When using One-touch connection (NFC)



- 1 Hold the remote device near to the N-Mark on the Bar Speaker until the remote device vibrates.  
When the BLUETOOTH connection is established, the blue LED indicator on the Bar Speaker lights up ( ).
  - 2 Start playback of audio source on the remote device.
- Compatible remote devices  
Remote devices with a built-in NFC function  
(OS: Android™ 2.3.3 or later, excluding Android 3.x)



A dedicated App for this model is available on both Google Play™ and App Store.  
Search for "SongPal" and download the free App to find out more about the convenient features.